

COMPLETE ACCESS CONTROL FOR

Retail



Smart Locks Connected to a Cloud-Based Access Control System

Provide Power and Versatility to Secure Any Door



Restrict Access for Different Types of Employees

A **pharmacy** within a superstore is a prime example — regular store employees shouldn't be allowed access, no matter what. Fast-food chains often license with retailers to serve within the retail stores. Retailers need to be able to let those employees in but restrict access to employee break rooms or merchandise areas.

Being able to fit technology-enabled locks on to any door gives retailers of any type the capability to control access anywhere and everywhere it matters. Every door is an opportunity to reduce risk or improve the organization at your store.

Bathrooms

High volume retail spaces aren't public-access lavatories. Having to clean or restock restrooms can take salespeople away from the work that matters most. Managers looking to limit bathroom usage to employees and paying customers have a solution in an access control system that secures any door they have.



Cash Rooms

In spite of the highly digital retail landscape, stores are still tasked with properly securing large volumes of cash. Even with closed-off safes, the concern of internal theft remains. Retail managers don't have to worry about their employees when there's a solid security mechanism in place. Access control systems built for retail businesses of all sizes leave managers assured that cash rooms are only accessed by those they trust.



Break Rooms

Employees on break deserve to be spared from interruption. With a protected break room, workers can properly recharge for their next shift on the sales floor. Retail spaces with dedicated rooms can use access control to restrict guests from entering these spaces without the right credentials.



Store Receiving

Manage Repair and Maintenance Crews

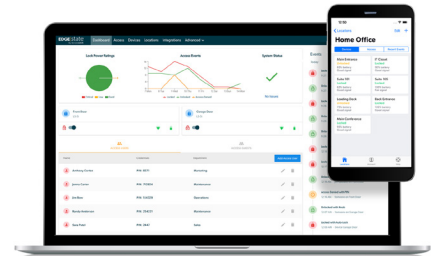
Keeping a functional retail environment is a key part of creating an appealing shopping environment for customers. For retailers without internal staff for complex repairs, coordinating with maintenance professionals can be a real hassle when their work needs to be done when the store isn't open for business.

Similar to how after-hours deliveries are accomplished, cleaning and maintenance crews can be administered credentials in the form of a smart lock access code that allows them entry without a manager or other employee present. Their code is unique to them, and they're responsible for what happens in the space while they're there.



Using Access Control Software to Create Transparency and Enhance Operations

The key to securing a retail store is a unified solution that lets managers address the various challenges each store or department faces and provides additional visibility and control over access. The ability for store managers to use a single system to control the locks on various door types and manages different levels of access based on the employee's role is the best way to manage retail stores.



When considering an access control solution, ask:

- What types of doors and entryways need to be secured, and is the system capable of controlling them all?
- How many different types of employees are there, and how important is it that only people in specific roles can access certain areas of the store?
- When do the employees or vendors need access, when should that access be revoked, and should someone be physically present to control that access?



Access control needs can vary by store type and location, but cloud-based software can support businesses of all shapes and sizes. **KeyinCloud** software is compatible with your preferred credentials and hardware and gives you the ability to manage and monitor access from any smartphone or computer through a single dashboard. This added visibility and control over access can create a safer and more secure retail environment.