



**August**

**MERCURY SECURITY**

**HID**

**Yale** smart Living

**EMTEK**  
ASSA ABLOY

POWERED BY RemoteLOCK



# KeyInCloud

The laptop screen displays the KeyInCloud dashboard with the following components:

- Lock Power Ratings:** A circular gauge showing a green needle pointing to 'Good'.
- Access Events:** A line graph showing activity from 7 Mon to 14 Mon. The legend includes Locked (red), Unlocked (green), and Access Denied (yellow).
- System Status:** A green checkmark and the text 'NO ISSUES'.
- Door Controls:** Two sections for 'Front Door' and 'Garage Door', each with a lock icon and a status indicator.
- ACCESS USED / ACCESS REQUESTS:** Two tabs for managing access.
- User Table:**

Name	Credential	Department	Actions
Anthony Cortez	PIN: 8371	Marketing	✎ ✖
Jerma Carter	PIN: 712924	Maintenance	✎ ✖
Jim Bow	PIN: 954926	Operations	✎ ✖
Randy Anderson	PIN: 204821	Maintenance	✎ ✖
Sara Patrici	PIN: 2447	Sales	✎ ✖

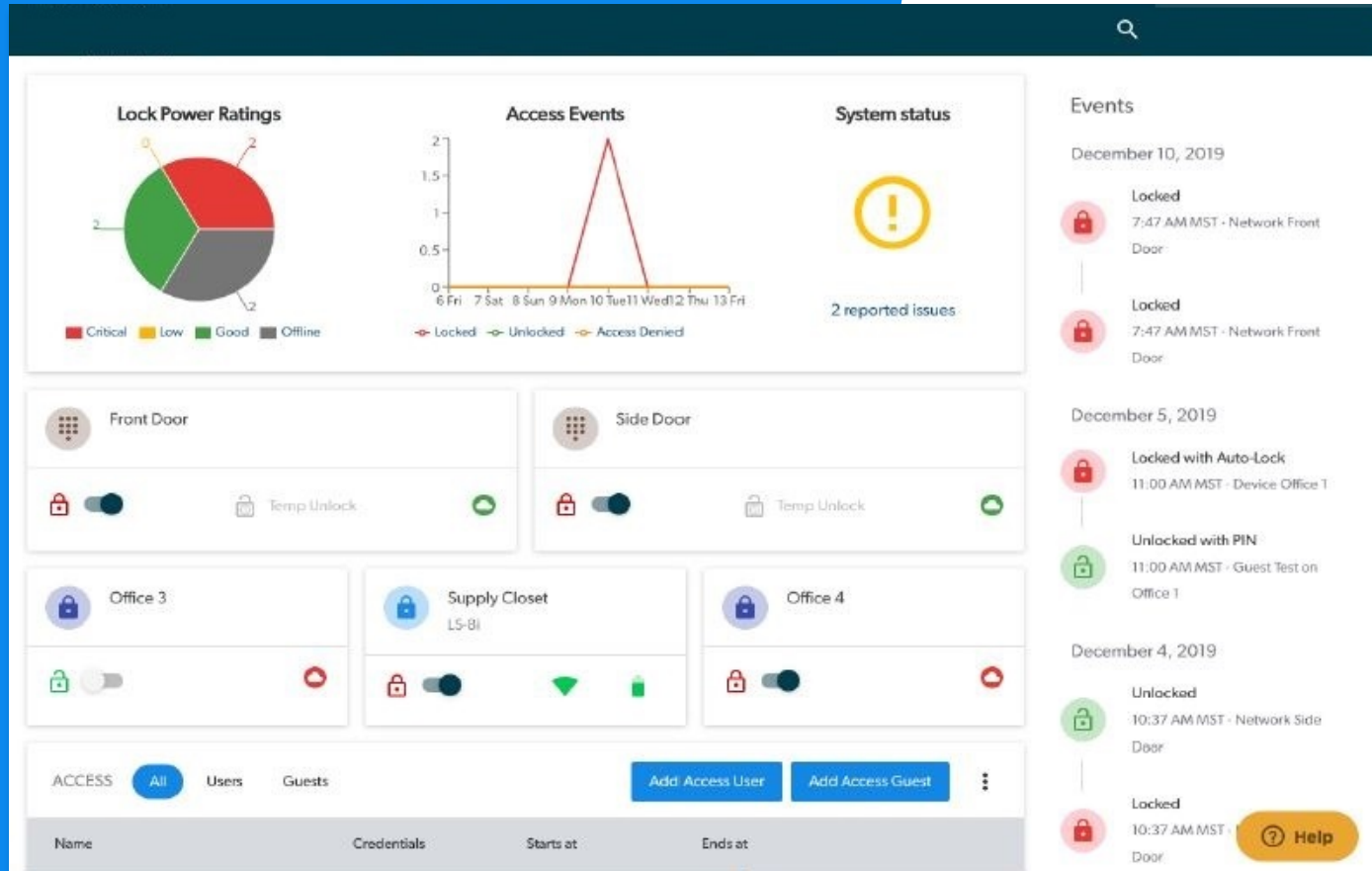
The smartphone screen displays the mobile interface for '123 Walnut St.' with the following components:

- Navigation:** Menu icon, address '123 Walnut St.', and a plus sign.
- Tabs:** 'Devices', 'Access', and 'Events'.
- Device Cards:** Three cards for 'Main Entrance', 'Unit 345', and 'Unit 347', each showing 'OpenEdge' status and a 'LOCKED' button.
- Events List:** A vertical list of events with icons for lock, unlock, and access denied.

POWERED BY  
RemotelOCK

## The ultimate platform for cloud-based access.

# Centralized Dashboard



- ✓ Quick to learn and easy to use.
- ✓ Remote control from anywhere.
- ✓ Automate access for short-term guests.
- ✓ Scales to thousands of locks and users.
- ✓ Manage multiple properties.

# Features Overview

## ✓ Centralized User Management

View and manage all access users across all your locks in a single view.

## ✓ Mass User Management

Grant or revoke access to multiple locks in a single step, instead of one lock at a time.

## ✓ Guest Code Functionality

Provide self-expiring access codes for temporary guests and maintenance.

## ✓ Advanced Account Permissions

Grant employees permission to manage specific locations and doors or allow tenants to control their residential door.

## ✓ Access & Device Schedules

Create schedules and limit employee access to specified times or days of the week.

## ✓ Short-term Booking Integrations

Automate short-term access by integrating with Airbnb, HomeAway and other booking partners.

## ✓ Full-featured Notification Management

Set up alerts for specific events including low battery warnings and unlocks.

## ✓ Advanced Reporting

Filter access logs across all your locks, view administrator logs and export reports.



# Yale Assure Lever-set

with Yale Access Module and BLE Gateway

Secure your home with this Yale Real Living electronic lock and enjoy the convenience of unlocking and locking your door using the backlit touchscreen keypad; you'll never have to carry around your keys again.

**SKU: YRL226-CBA-(colors 619, 605, or OBP)**

## Door Specifications

- **Face Bore:** 2 1/8"
- **Edge Bore:** 1"
- **Backset:** 2 3/8" or 2 3/4" (adjustable latch)
- **Door Thickness:** 1 3/4" to 2 1/4" \* \*1 3/8" requires special order thin door kit
- **Strike:** 1 1/8" x 2 3/4"
- **Strike Front:** Round Corner
- **Keyway:** KW-1 5 Pin (keyed models come with 2 keys) – Key-Free YRL236
- **Batteries:** 4 AA Alkaline Batteries (Included)
- **Handing:** Self-handing
- **Grade:** Tested to ANSI/BHMA Grade 2
- **YRL226 Exterior:** 1 3/8" L x 2 3/4" W x 6 1/16" H – Handle 4-1/4"
- **YRL226 Interior:** 2 1/8" L x 3" W x 6 7/8" H – Handle 4-14"





# Yale Security nexTouch Cylindrical Lever

with Yale Access Module and BLE Gateway

**SKU: NTB620-CBA (colors 626 and OBP)**

## Door Specifications:

- **Function:** Electronic Keyless Lock Entry with Key Override
- **Backset:** 2-3/4" (70mm) standard backset
- **Door Thickness:** 1-3/4" (44mm) door thickness standard
- **Handing:** Field reversible
- **Latch:** Cylindrical 1/2" latch length, Latch Front Size 2-1/4" x 1-1/8"
- **Cylinder:** Yale Commercial SFIC
- **Environmental Specifications:** Operating temperature: -40°F to +140°F (-40°C to +60°C)
- **Power Source:** 4 AA alkaline batteries (included) with optional hardwire input for 9VDC external power; 9V battery power backup on keypad
- **Weather Resistant:** Yes
- **ANSI/BHMA:** Certified ANSI/BHMA Grade 1
- **Interface:** Capacitive touchscreen
- **User Codes:** Up to 500 unique user codes

### UL/cUL:

Functions are UL - cUL Fire Listed for use on fire doors having a rating up to and including 3-hours



Touchscreen  
Augusta Lever as s





# Yale Access Module

## with BLE Gateway

Connected by Yale Access Locks/Levers and Kits come with the Connect BLE Bridge so you can lock and unlock from anywhere using your Yale Access app from anywhere – The Yale Access Gateway is the locks connection to the internet in order to remotely control your Yale Lock and required to use the KeyinCloud Software



### Yale Access App Features:

**Comes with DoorSense** - Know if your door is not only locked or unlocked by also closed or opened.

**Dimensions:** 2.4" H x 1.5" D

### Inside the Yale Access Upgrade Kit Box:

- Yale Access Module
- Connect Wi-Fi Bridge
- DoorSense

### Requirements:

- Yale Access app from App Store or Google Play Store
- 802.11 b/g/n (2.4GHz) Wi-Fi Network
- Yale Connect Wi-Fi Bridge required for away from home access
- Bridge requires a standard North American outlet





# Yale Access Modules Replacements



SKU: AYR202-CBA-KIT



SKU: AUG-AC02



SKU: AYR202-CBA-USA



# Connecting Yale Assure Devices via Yale Access to the Internet

